

TrackIt[®]

Devices

Samsung Galaxy Tab

A

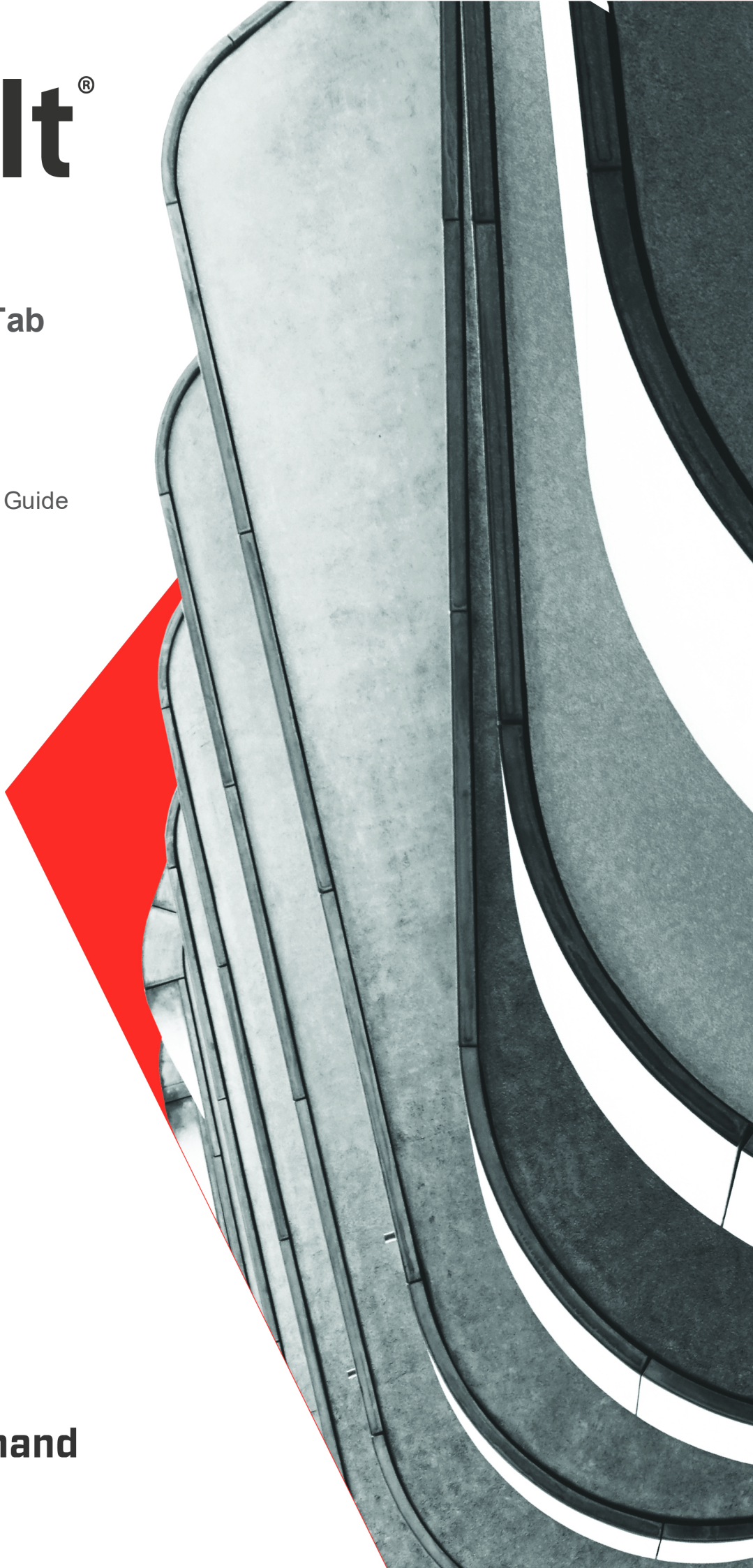
Version: 1.0

Tablet & Mount Installation Guide

04/09/21



**Command
Alkon**



The Samsung Galaxy Tab A, Zirkona® Mount, and ProClips® dock are one of the recommended tablets and docking equipment for Command Alkon Incorporated customers. The [Samsung Galaxy Tab Active2](#) and Panasonic Toughpad L1 are also recommended and are accompanied with device-specific mounting and docking equipment. Installation for the Samsung Galaxy Tab A is very similar to the installation for the [Samsung Galaxy Tab® E](#).

Overview

This guide includes requirements and instructions for safely installing the Samsung Galaxy Tab® E, mount, and dock in a vehicle. The steps for installation are:

1. [Ensure you have met the hardware and software requirements for installation.](#) Before starting your installation, check and become familiar with the contents of the installation kit. You may need to gather equipment not included in the installation kit.
2. [Install the mount and dock in the vehicle.](#) The proper procedures are below:
 - i. [Fastening the mount to the dashboard](#)
 - ii. [Attaching the dock & mount](#)
 - iii. [Connecting the dock to vehicle power](#)
 - iv. [Inserting the tablet into the sleeve & power block](#)
 - v. [Securing the power cable](#)

Hardware & Software Requirements

This installation kit includes a Samsung Galaxy Tab A, Zirkona® Mount, and ProClips® Dock. The Samsung Galaxy Tab A has been provisioned in-house and is ready for installation when shipped.



BYOD customers will need to ensure their devices are properly provisioned. Ideally, these customers would allow Command Alkon Incorporated to remotely update and troubleshoot devices via TrackIt Remote Support.

Compatibility requirements

The Samsung Galaxy Tab A and dock are shipped with the required hardware and software configurations.

For troubleshooting the Samsung Galaxy Tab A setup, refer to the software and hardware requirements for the Engine Data Controller (EDC) [hardware and software requirements](#).

Hardware components

Ensure the following components are part of your installation kit:



Component Samsung Galaxy Tab A

Description Android tablet with Android OS 6.0.1+ installed.



Component ProClips Tablet Sleeve

Description Tough sleeve for containing the tablet. The front and back plates are attached together with screws after the tablet is inserted.



Component ProClips Power Block

Description

- ▶ Attachable to the Zirkona mount
- ▶ Connects to the vehicle's power supply
- ▶ Includes a charging box



Component Fuse 2A, with holder

Description

Inline fuse for connecting the power block to the vehicle's power supply.



Component 1 Zirkona Mount



Description Rugged, adjustable mount.



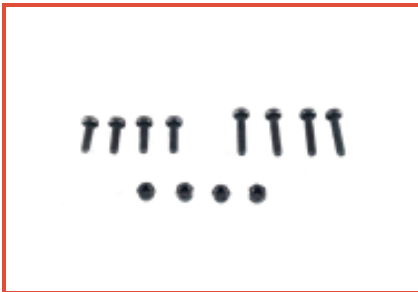
Component Back Plate

Description Round plate with four openings for bolts.
Designed to allow for drilling directly to the vehicle dashboard.

Misc. Components



dock screws



mount screws



charging block screws



dock keys



Screws for securing the mount to the vehicle surface are not included in the kit. The technician installing this hardware may determine the best type of screw needed to secure the mount to the vehicle dash.

Required tools & equipment

- ▶ Phillips screwdriver or power screwdriver
- ▶ Pliers or wrench
- ▶ Wire cutters
- ▶ Wire stripper
- ▶ Wire connector
- ▶ Drill
- ▶ Additional screws

To test the tablet and dock

After verifying all the items above are included in the installation kit, perform a test of the tablet and dock to make sure both are functional.

- ▶ To test the tablet, plug it into a power supply with a USB charger and turn the tablet on to verify the tablet functions.
- ▶ To test the dock, you will first need to mount and attach it to the vehicle's power supply.



Before installation, see our [Installation Warnings](#) and [BYOD & BYOD EDC Policy](#).

Install the Samsung Galaxy Tab A

Mounting the dock and tablet in your vehicle includes the following steps:

1. Fastening the mount to the dashboard
2. Attaching the tablet dock to the mount
3. Inserting the tablet into the sleeve and power block
4. Connecting the dock to the power supply
5. Securing the power cable and charging box

Fastening the mount to the dashboard

Because fastening the mount to a vehicle's dashboard is subject to many variables and because installers are expected to have previous experience with this process, these instructions do not include specific steps for this process. However, see the tips below for additional information to help in the process.

Helpful tips

- ▶ Before fastening the mount to the dashboard, find the optimal spot for the tablet, tablet dock, and mount to be positioned. The best location will be one that does not allow the tablet to block the driver's view of the road or interfere with the safe and standard operation of the vehicle. Keep in mind the mount is adjustable.
 - ▶ To get an accurate estimation of how the tablet dock and mount will be positioned, it might be helpful to attach the tablet dock to the mount temporarily. If this is done, unscrew the mount and dock before installing the mount on the dashboard for ease of installation.
 - ▶ Screwing the mount into the dashboard will require drilling through the dashboard or dash plate first to establish screw-in points for the mount. Use proper equipment, safety, and sense to avoid damaging any wiring or equipment in and around the dashboard. (Continued)
-

▶ Because all vehicles differ, the screws and washers required for securing the mount to the vehicle's dash are not included with the kit, and the installer will need to choose screws and washers that best fit the vehicle and mount.

Attaching the dock & mount

After you have attached the mount, follow the steps below for securing the power block to the RAM mount.

Step 1



Detach the tilt-swivel base plate from the power block by unscrewing the center screw in the power block. Pull to get them apart.

Step 2



Tilt-swivel base plate



Power block

Ensure you have the two separate parts completely disconnected.

Step 3



Attach the tilt-swivel base plate diagonally to the RAM mount with the screws and nuts provided.

Step 4



Reattach the power block to the base plate by securing the center screw.



Connecting the dock to vehicle power

Now that the power block has been connected to the mount, you can connect the power block to the vehicle's power. To do this, wire the red and black wire extending from the bare wire lead directly to the vehicle's power supply and install a 2A inline fuse.

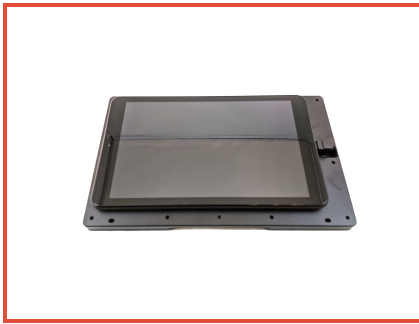
1. Connect the black wire to ground or the vehicle's chassis.
2. Install the 2A inline fuse included with the installation kit on the red wire.
3. Connect the red wire to the vehicle's power.

Before reinstalling the vehicle's dashboard plate or head unit, follow the step below to insert the tablet or otherwise verify the power block is receiving power from the vehicle's power.

Inserting the tablet into the sleeve & power block

Below are the steps for inserting the tablet into the secure sleeve. This sleeve is detachable from the power block and is meant to encase the tablet at all times.

Step 1



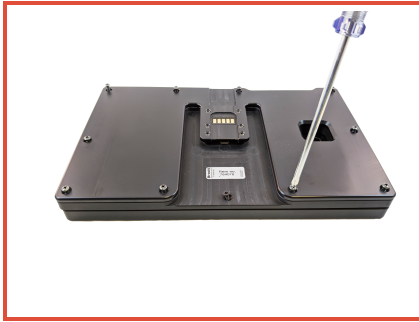
Set the tablet on the sleeve back plate and connect the micro USB to the tablet.

Step 2



Place the front plate on top of the tablet and back plate with the ProClips logo on the right and the camera opening on the left. Ensure the top plate snaps over the tablet.

Step 3



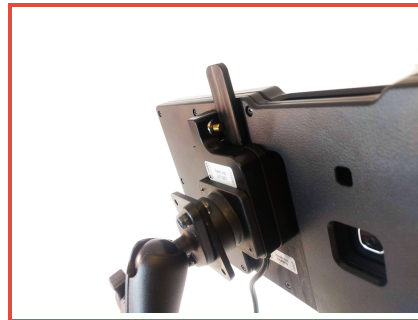
With the tablet encased, carefully turn the front and back plates over and screw them together.



Step 4



Slide the sleeve into the back of the power block.



Securing the power cable

After you've connected the dock to vehicle power cables and you've likewise verified the connection, we recommend securing the power cable. Due to the numerous existing cables running throughout your vehicle, signal and power interference may occur if the cable dangles loosely inside the dashboard.

We also recommend securing the charging box using the adhesive strip on the bottom and/or using the four screws included in the kit.

What's next?



Now that your tablet is secured to the vehicle, the device must be configured to communicate with your Engine Data Controller (EDC). Instructions regarding this process are found in the [EDC Installation Guide](#).